



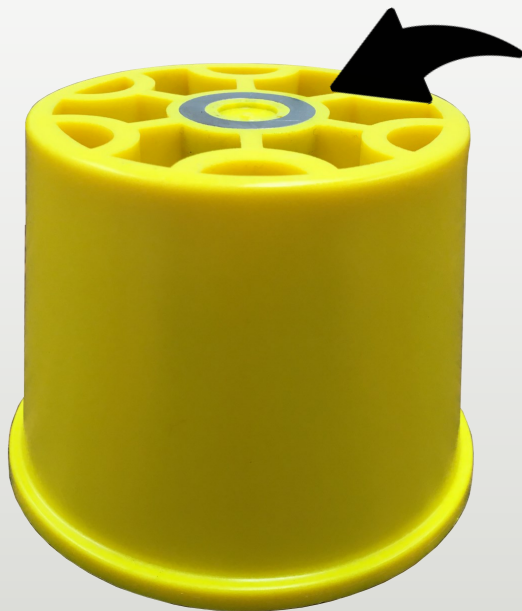
RHINO PRODUCTS, LLC



www.rhinoproductsllc.com

For decades scientists have been trying to figure out how a rhinoceros can support their massive body weight with relatively small feet. The secret is in how their feet distribute weight. Rhino Feet™ elevation pads are designed with the same theory.

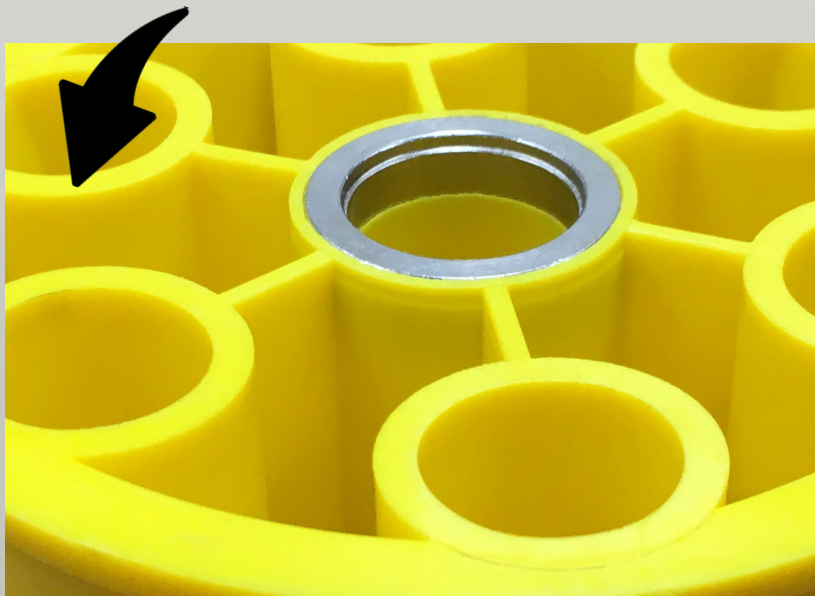
Rhino Feet™ are specially designed, patent-pending support pads that stick to a wide variety of items and keep them elevated. Rhino Feet can support massive weight loads and have magnetic inserts molded directly into the part. These magnets allow the Rhino Feet to travel with the item you are supporting. It makes transporting and working on heavy metal items much faster and easier.



The top of each Rhino Foot has a rare-earth magnet molded directly into the part. It provides strong holding power on ferrous metal surfaces.

The bottom of each Rhino Foot has a steel insert. This allows Rhino Feet to be stacked together for storage purposes.

Rhino Feet have a patent-pending, unique webbed geometry that supports incredible weight loads.



Rhino Feet available in four sizes:

RF4 - 4" Tall Rhino Foot

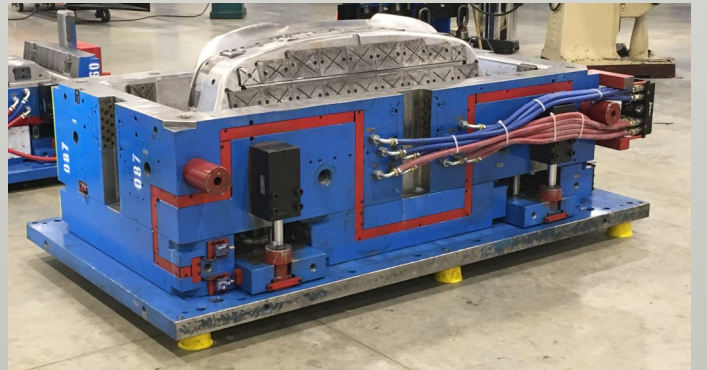
RF3 - 3" Tall Rhino Foot

RF2 - 2" Tall Rhino Foot

RFM - Mini Rhino Foot (Coming soon)

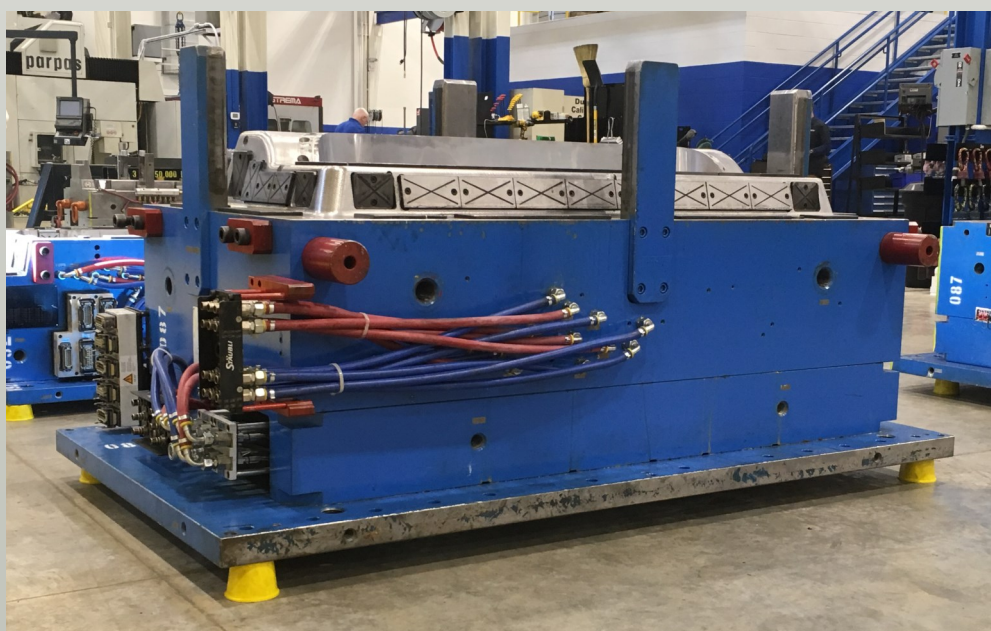
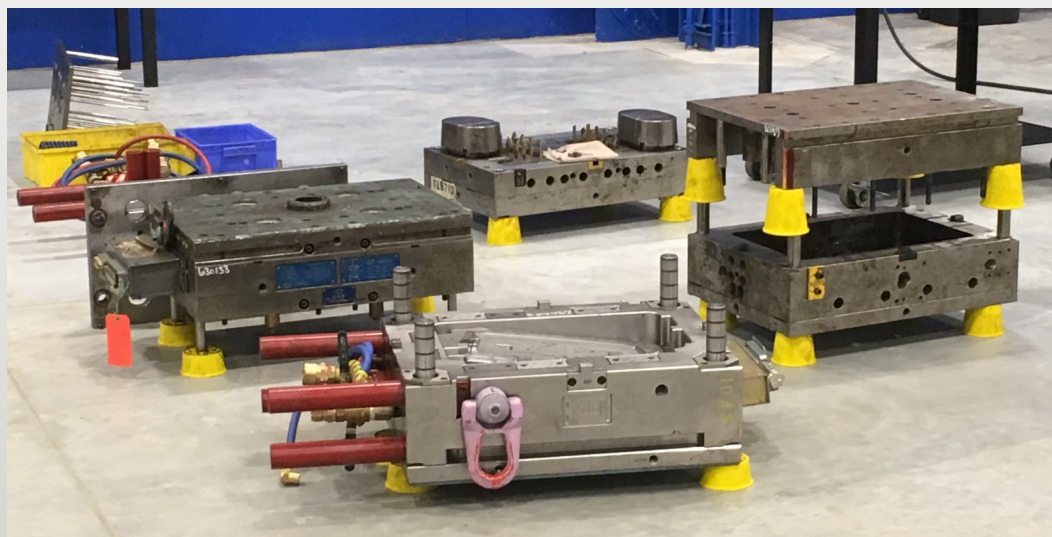
Rhino Feet Have Unbelievable Capacity

They Support Massive Weight Loads!



Even 100,000+ pound loads
are no problem

Rhino Feet Work Great For Pieces Big and Small



Rhino Feet are Magnetic



Rhino Feet are magnetic which means they can travel with the workpiece. Stick them on and leave them in place. Eliminate wood pallets and blocks from your shop!

- ◆ Improve efficiency and reduce wasted time employees spend searching for wood
- ◆ Rhino Feet are uniform in size - stop trying to match up wood pieces to the same height and width
- ◆ Eliminate the trip hazards that wood pallets and blocks cause and avoid worker's compensation claims
- ◆ Eliminate potential injuries and OSHA violations from stacking wood pallets
- ◆ Free up much needed floor space by removing the large footprint of wood piles
- ◆ Reduce cleaning of machined surfaces by avoiding the transfer of dirt and oil from filthy wood pieces
- ◆ Improve your 5-S efforts by improving cleanliness and organization of your shop

Stick Rhino Feet Where You Need Them

Keep your Rhino Feet close by. The compact size of Rhino Feet allow you to place them where they are always within reach. The magnet lets you keep them out of the way so they don't get in your way. Stick them to I-beams, toolboxes, machines, benches, cabinets, tables, forklifts, etc.



Store them anywhere!



Safe Working Loads For Rhino Feet

Rhino Feet have undergone rigorous destructive testing to ensure the product is safe to use in industrial settings. When used properly, Rhino Feet can support extremely heavy objects. Multiple tests have been performed on each size Rhino Foot to determine the average compressive yield strength and safe working loads.

Rhino Feet have been assigned safe working loads with a 3 to 1 safety factor.

Item Number	Average Compressive Strength	Safe Working Load
RF4 (4" Rhino Foot)	27,604 pounds (12,521 kg)	7,000 pounds (3,175 kg)
RF3 (3" Rhino Foot)	26,815 pounds (12,163 kg)	7,000 pounds (3,175 kg)
RF2 (2" Rhino Foot)	27,392 pounds (12,425 kg)	7,000 pounds (3,175 kg)
3MN5 (3" Rhino Foot Mini – Threaded) NO BOLT IN USE	11,330 pounds (5,139 kg)	3,000 pounds (1,361 kg)
3MN5 (3" Rhino Foot Mini – Threaded) WITH BOLT IN USE	3,390 pounds (1,538 kg)	830 pounds (377 kg)
2MN5 (2" Rhino Foot Mini – Threaded) NO BOLT IN USE	11,180 pounds (5,017 kg)	2,670 pounds (1,211 kg)
2MN5 (2" Rhino Foot Mini – Threaded) WITH BOLT IN USE	3,340 pounds (1,515 kg)	800 pounds (363 kg)
1MN5 (1" Rhino Foot Mini – Threaded) NO BOLT IN USE	9,380 pounds (4,255 kg)	2,530 pounds (1,148 kg)
1MN5 (1" Rhino Foot Mini – Threaded) WITH BOLT IN USE	3,840 pounds (1,742 kg)	630 pounds (286 kg)



RHINO PRODUCTS, LLC

Visit our website for more information or to find a distributor near you.

www.rhinoproductsllc.com

info@rhinoproductsllc.com